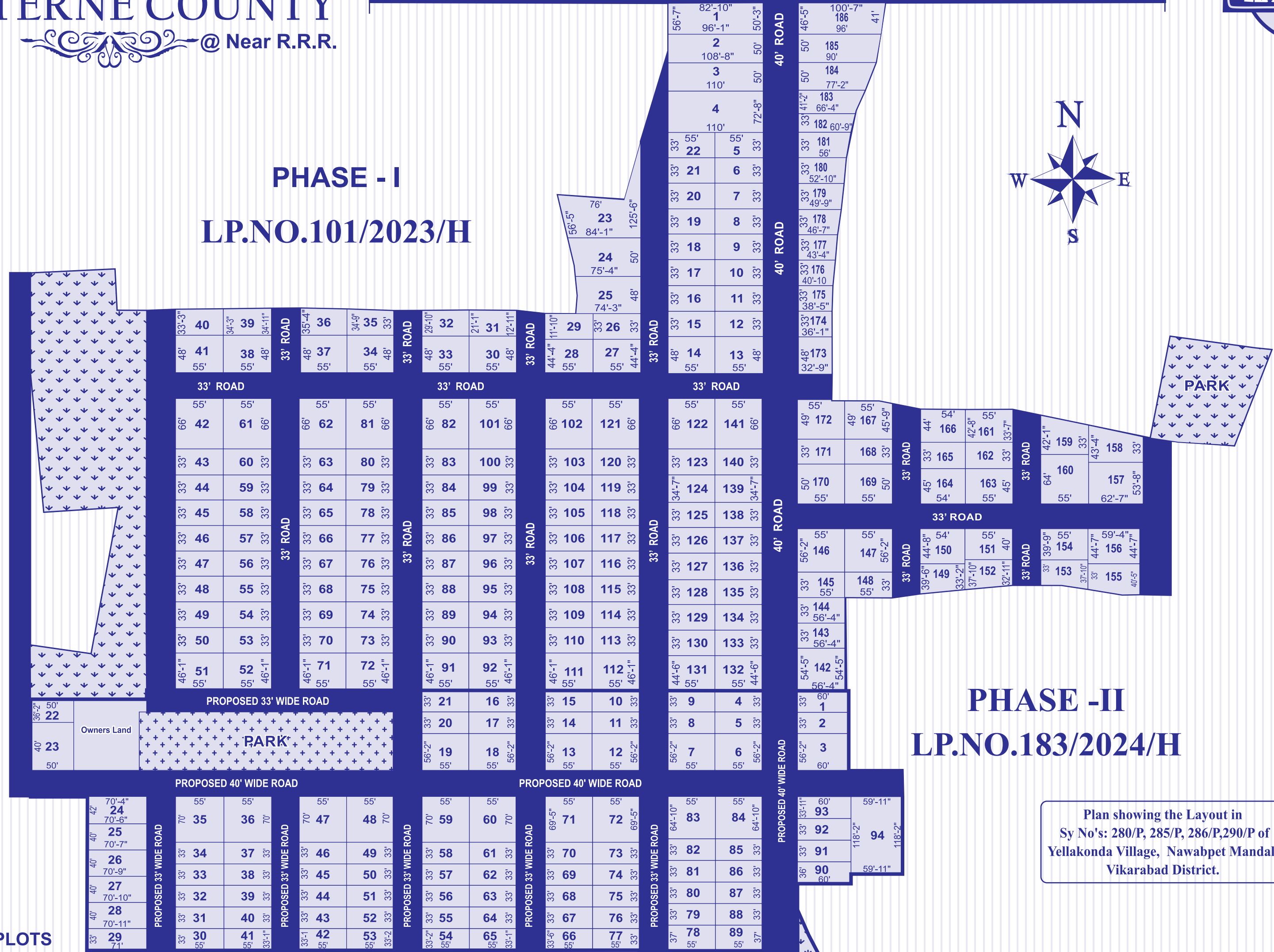
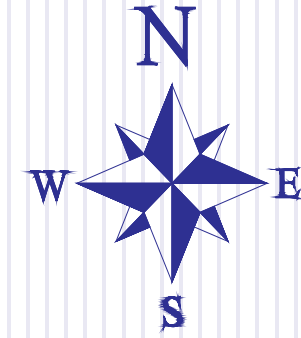




PHASE - I
LP.NO.101/2023/H



PHASE - II
LP.NO.183/2024/H

Plan showing the Layout in
Sy No's: 280/P, 285/P, 286/P, 290/P of
Yellakonda Village, Nawabpet Mandal,
Vikarabad District.

MORTGAGE PLOTS
22 TO 35

P. Anjali T.P.A.
V. Anand ASST. DIRECTOR
G. Srinivasan DEPUTY DIRECTOR
V. Venkatesh JOINT DIRECTOR
S. Chand DIRECTOR OF TOWN & COUNTRY PLANNING
B.E. M.U.R.P.
GOVT OF TELANGANA, HYDERABAD



BHASHYAM REALTORS
Kavuri Hills, Madhapur, Hyderabad - 500 081.

OPEN PLACE